



# GPL 672F2FR

## 6V 7.2Ah

GPL 672 is a general purpose battery with 5-8 years in standby service or more than 260 cycles at 100% discharge in cycle service. As with all CSB batteries, all are rechargeable, highly efficient, leak proof and maintenance free.



### Specification

<b>Cells Per Unit</b>	3
<b>Voltage Per Unit</b>	6
<b>Capacity</b>	7.2Ah @ 20hr-rate to 1.75V per cell @25 °C (77°F)
<b>Weight</b>	Approx. 1.37kg(2.7 lbs)
<b>Maximum Discharge Current</b>	110 A (5sec)
<b>Internal Resistance</b>	Approx. 13.5 mΩ
<b>Operating Temperature Range</b>	Discharge: -20°C~50°C (-4°F~122°F) Charge: 0°C~40°C (32°F~104°F) Storage: -20°C~40°C (-4°F~104°F)
<b>Nominal Operating Temperature Range</b>	25°C±3°C (77°F±5°F)
<b>Float Charging Voltage</b>	3.5 to 15.0 VDC/unit Average at 25°C (77°F)
<b>Recommended Maximum Charging Current Limit</b>	2.16A
<b>Equalization and Cycle Service</b>	14.4 to 15.0 VDC/unit Average at 25°C (77°F)
<b>Self Discharge</b>	CSB Batteries can be stored for more than 6 months at 25°C (77°F). Please charge batteries before using. For higher temperatures the time interval will be shorter.
<b>Terminal</b>	Faston Tab 187/250
<b>Container Material</b>	-ABS (UL94-V0)*Flame resistance case )



MH14533(N)



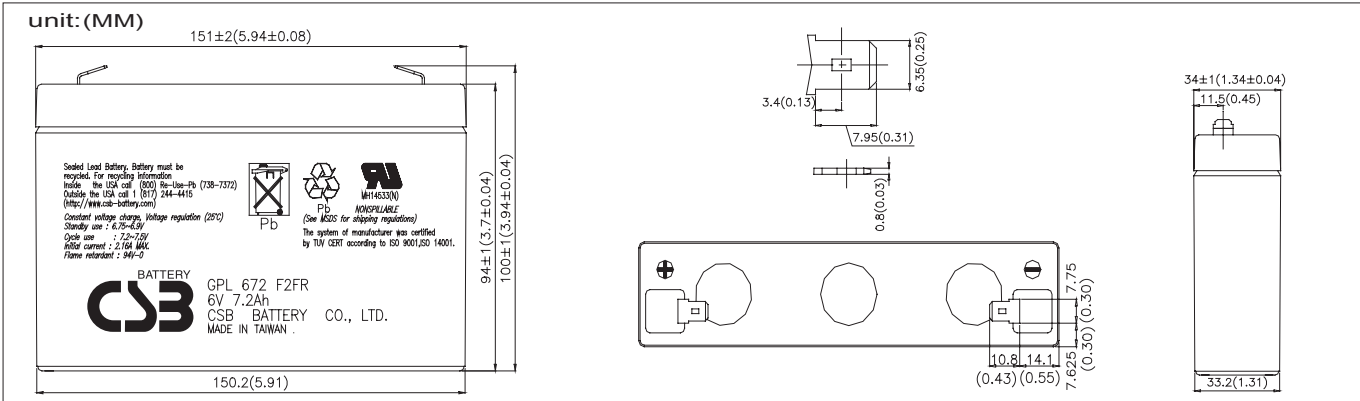
ISO 9001  
No.:041005117



ISO 14001  
NO. UM 1-12-0045

CSB-manufactured batteries are UL-recognized components under UL924 and UL1989. CSB is also certified by ISO 9001 and ISO 14001.

### Dimensions



### Constant Current Discharge Characteristics Unit:A (25 77 )

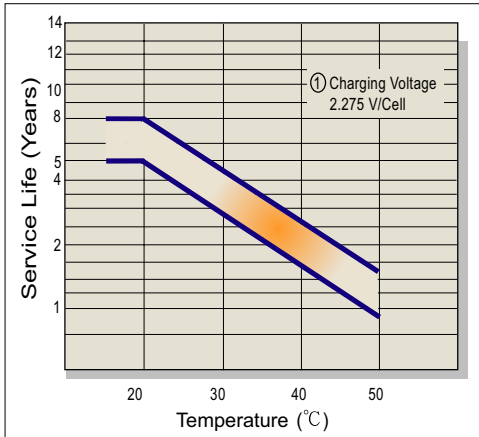
F.V.	5MIN	10MIN	15MIN	30MIN	1HR	2HR	3HR	4HR	5HR	8HR	10HR	20HR
1.60V	24.10	19.20	16.70	9.05	4.61	2.74	1.87	1.53	1.29	0.901	0.739	0.374
1.67V	23.70	18.70	15.90	8.90	4.58	2.73	1.85	1.51	1.28	0.886	0.729	0.368
1.70V	23.50	18.50	15.60	8.84	4.57	2.72	1.84	1.50	1.27	0.879	0.725	0.366
1.75V	22.20	17.40	14.40	8.52	4.48	2.69	1.80	1.44	1.20	0.864	0.709	0.359
1.80V	20.90	16.20	13.20	8.19	4.39	2.66	1.75	1.38	1.13	0.849	0.693	0.351
1.83V	19.60	15.10	12.00	7.87	4.30	2.63	1.71	1.32	1.06	0.834	0.677	0.344

### Constant Power Discharge Characteristics Unit:W (25 77 )

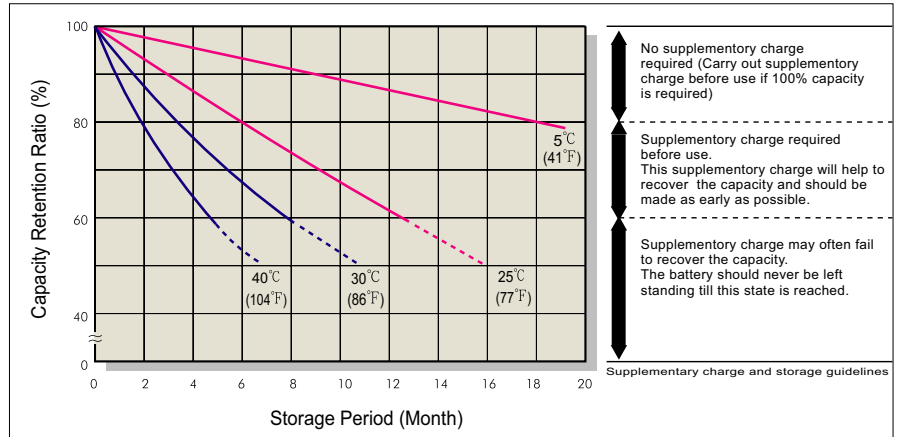
F.V.	5MIN	10MIN	15MIN	30MIN	1HR	2HR	3HR	4HR	5HR	8HR	10HR	20HR
1.60V	129.00	105.00	92.50	51.50	27.00	16.10	11.00	9.00	7.65	5.35	4.39	2.23
1.67V	128.00	102.00	83.10	50.80	26.80	16.10	10.90	8.90	7.55	5.25	4.34	2.20
1.70V	128.00	102.00	79.00	50.50	26.80	16.10	10.90	8.85	7.50	5.20	4.32	2.18
1.75V	122.00	96.50	77.30	49.00	26.30	15.90	10.60	8.53	7.13	5.13	4.24	2.14
1.80V	117.00	91.50	75.50	47.60	25.80	15.80	10.40	8.20	6.75	5.05	4.15	2.10
1.83V	111.00	86.50	73.80	46.10	25.30	15.60	10.20	7.88	6.38	4.98	4.07	2.06

● All mentioned values are average values.

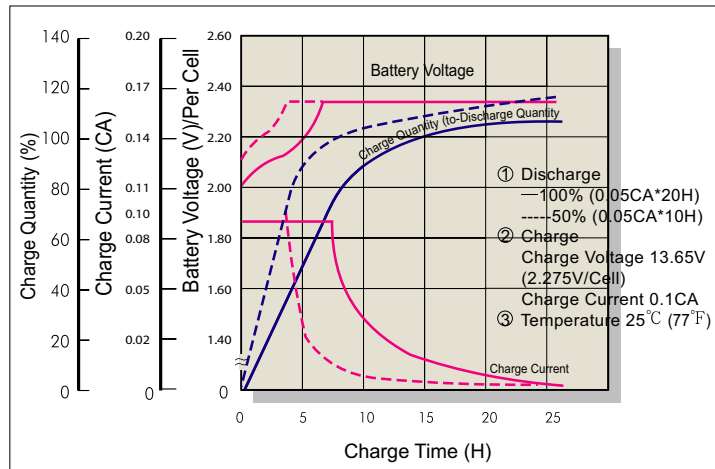
## Trickle (or Float) Service Life



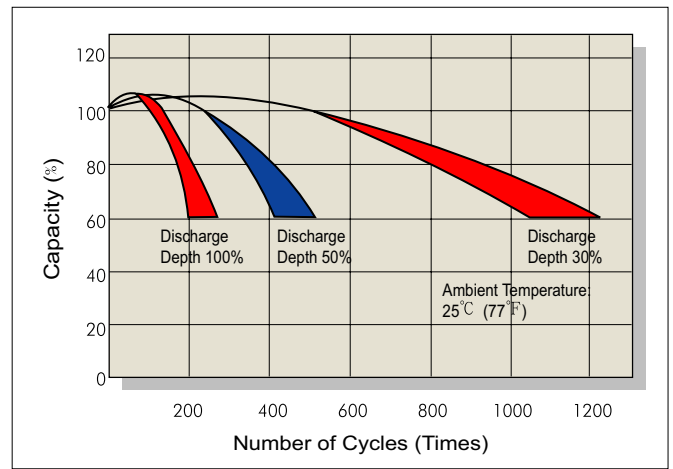
## Capacity Retention Characteristic



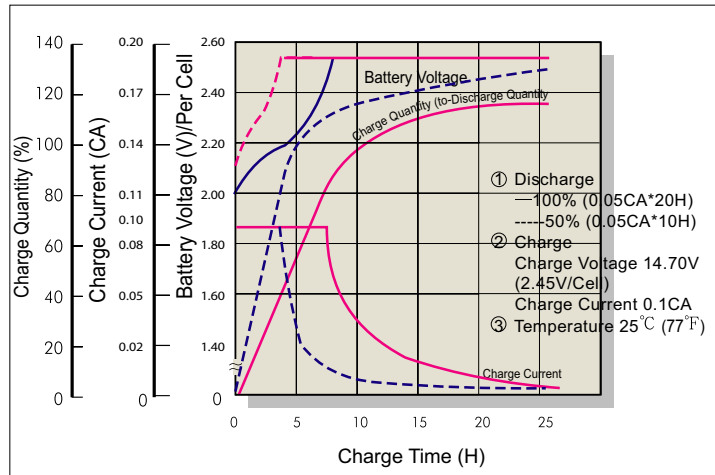
## Battery Voltage and Charge Time for Standby Use



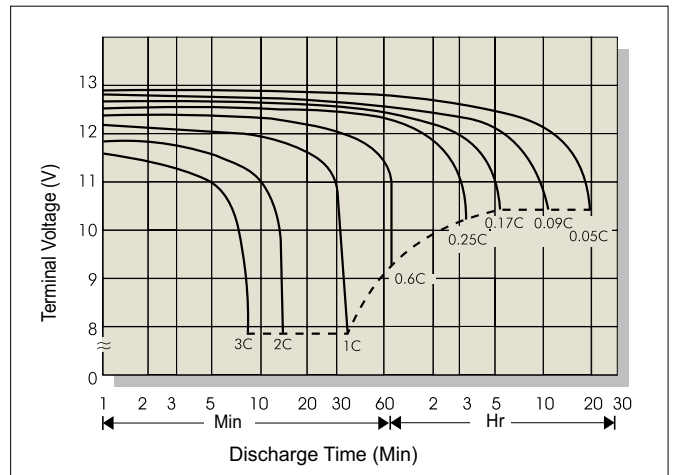
## Cycle Service Life



## Battery Voltage and Charge Time for Cycle Use



## Terminal Voltage (V) and Discharge Time (25°C 77°F)



## Charging Procedures

Application	Charge Voltage (V/Cell)			Max. Charge Current
	Temperature	Set Point	Allowable Range	
Cycle Use	25°C (77°F)	2.45	2.40-2.50	0.3C
Standby	25°C (77°F)	2.275	2.25-2.30	

## Discharge Current VS. Discharge Voltage

Final Discharge Voltage V/Cell	1.75	1.70	1.55	1.30
Discharge Current (A)	0.2C>(A)	0.2C<(A)<0.5C	0.5C<(A)<1.0C	(A)>1.0C

Sales Office URL: [WWW.CSB-BATTERY.COM](http://WWW.CSB-BATTERY.COM)

**CSB BATTERY CO., LTD.**  
TAIWAN OFFICE  
Tel: +886-2-8751-5000  
Fax: +886-2-8751-6161  
E-mail: [service@csb-battery.com.tw](mailto:service@csb-battery.com.tw)

**CSB BATTERY LOGISTICS (SHANGHAI) CO., LTD.**  
SHANGHAI OFFICE  
Tel: +86-21-5046-1622, 5046-0833  
Fax: +86-21-5064-3314

**CSB BATTERY TECHNOLOGIES, INC**  
USA OFFICE  
Tel: +1-817-244-7777/1-8003 CSBUSA(272872)  
Fax: +1-817-244-4445  
E-mail: [csb@csb-battery.com](mailto:csb@csb-battery.com)

**CSB BATTERY LOGISTICS (SHANGHAI) CO., LTD.**  
BEIJING OFFICE  
Tel: +86-10-6597-8060, 6597-8070  
Fax: +86-10-6597-8050  
E-mail: [chinasls@csb-battery.com](mailto:chinasls@csb-battery.com)

**CSB BATTERY OF NETHERLANDS B.V**  
NETHERLANDS OFFICE  
Tel: +31(0) 180 418 140  
Fax: +31(0) 180 418 327  
E-mail: [eurosales@csb-battery.com](mailto:eurosales@csb-battery.com)

**CSB BATTERY LOGISTICS (SHANGHAI) CO., LTD.**  
SHENZHEN OFFICE  
Tel: +86-755-2694-2788/2606/2706  
Fax: +86-755-2694-2748  
E-mail: [she@csb-battery.com](mailto:she@csb-battery.com)